

Now and Forever Tea Towel

Juki Supplies



- Juki Sewing Machine w/applique stitches
- Tajima SAI Embroidery Machine
- Tajima Writer Plus software
- Open Toe presser foot "O"
- Edge Sewing presser foot "R"
- Tubular Hoop 300 x 200
- Prewound white bobbin (L style)
- Empty sewing machine bobbin

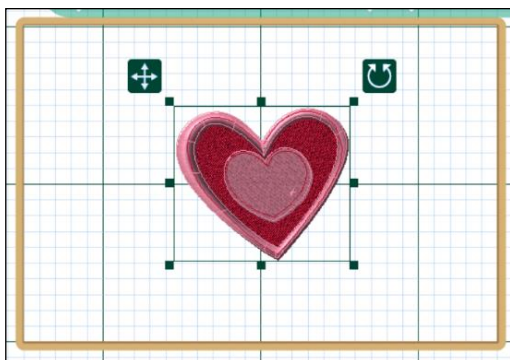
Fabric & Supplies


- White Tea Towel 20" x 30"
- 7/8" Ribbon 20 1/2" long
- 2 pcs 3/8" Ribbon 20 1/2" long
- Embroidery Thread - red, pink, white
- Tearaway Stabilizer 12" x 18"



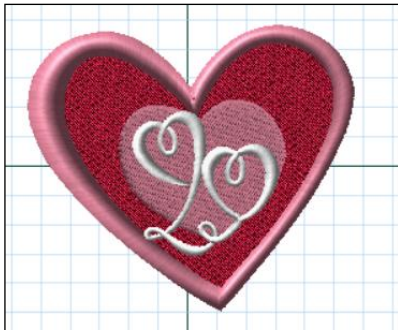
Embroidery

1. Open Tajima Writer Plus software.
2. Edit > Select Hoop > Standard Hoop > Tubular 300 x 200.
3. Add design  Celebrations > design CE 040 > Select.
4. Click and drag on one of the corners to enlarge to approx. 4.26 x 3.88.
5. Click on the rotate icon in the upper right area  and rotate so heart is straight, not angled. Move to center of hoop.



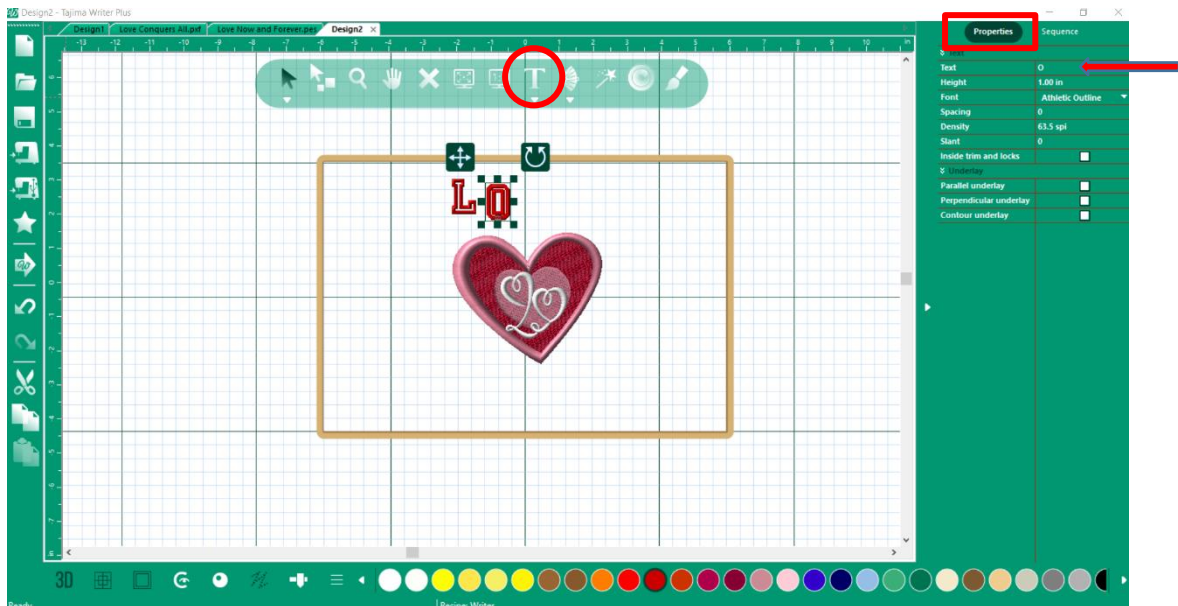
6. Add Design > Celebrations > design CE041 > Select.
7. Resize the design to 1.93 x 1.91. Place this design in the center heart.
8. Click on Thread Palettes.  Hover the mouse over this and choose Thread Palettes. Pick a thread brand and choose white.

Note: To make it easier to select parts of the design, open the Properties and Sequence window. Select Sequence and click on the part of the design you want to work with.



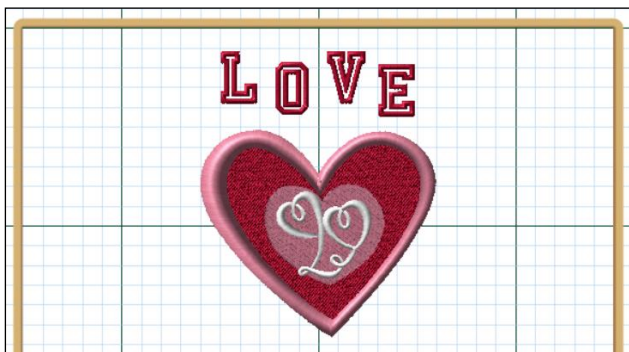
Lettering

1. Select the “T” for Text. Select the “T” for text again from the pop up window.
2. The word text will appear on your screen. Open the Properties box > Select Text, at top of screen > backspace to delete the word and enter the “L”.
3. Font > Athletic Outline > Move the L to the top left.
4. Select text again and follow the above instructions to create the “O”. Move this beside the L, staggering it down.

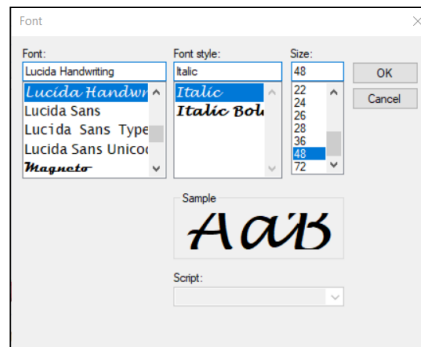


Now and Forever Tea Towel

- Continue adding the letters “V” and “E”. Stagger these and center as desired.



- Select T for text again. This time choose Import Truetype. In the Text area type, Now and Forever. Fonts > Lucinda Handwriting > size 48 > OK > OK.



- The words will be purple and ready for you to place. Move the lettering to the position you want below the heart. Left click to set the letters > Enter to complete. Select Red thread color.



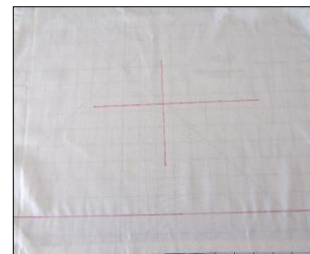
Now and Forever Tea Towel

8. File > Save As > navigate to your USB Drive > save as TCF (Tajima Combined Files). This will be your working file if you need to edit.
9. File > Save As > navigate to your USB Drive > save as DST (Tajima Stitch Files)


Stitching Embroidery

1. On tea towel, mark a line up 2" from the bottom for ribbon placement.
2. Create a crosshair 8" up from bottom for embroidery placement.
3. Hoop tearaway and tea towel.
4. Insert USB into Tajima SAI embroidery machine.
5. Open design.
6. Set needle colors and stitch design. Remove Tearaway.

Note: For information on how to set needle colors, refer to video <https://youtu.be/tvq-Kj67asc> on YouTube.



Adding Ribbon

1. Thread machine and bobbin with red thread.
2. Attach Open Toe presser foot to machine.
3. Select an applique stitch. 
4. Place one 3/8" ribbon on the drawn line 2" from the bottom.



5. Applique one side of the ribbon down.



6. Attach Edge Sewing foot to machine.

7. Select Applique stitch.



8. Place the 7/8" ribbon on left side of guide and previously sewn ribbon on the right side of guide. Sew the two ribbons down.



9. Place the other 3/8" ribbon beside the 7/8" ribbon. Align ribbons against guide as in previous step. Sew ribbons together.



Now and Forever Tea Towel

JUKI

10. Attach Open Toe presser foot to machine.
11. Select Applique stitch
12. Sew last side of ribbon down.

