

Wine Tote

A bottle of wine is a common hostess gift during the Holidays. Take your hostess gift to the next level with this easy homemade Wine Tote. Use pre-purchased towels to fussy cut the design out for the front of the tote. Options for this are at the bottom on the instructions.

Created by: Ginny Storm - Juki National Educator
Skill Level: Beginner to Advanced

Juki Supplies & Fabric

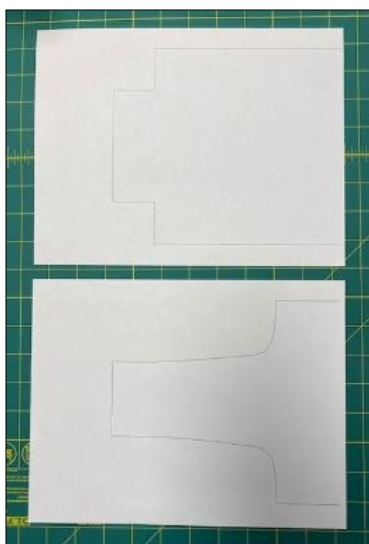
- Sewing Machine
- 1 empty bobbin
- Thread for sewing
- ¼ yd fabric for main fabric
- ¼ yd lining fabric
- ¼ yd fusible stabilizer
 - We used a medium weight Fat Quarters work great for this project



Sewing Instructions

1. Print the Wine Tote pattern. In your printer screen, select “actual size”.

Note: The pattern will print on two pages, line up the pattern pieces, (you can trim one piece to the bottom of the black lines), tape the 2 pieces together, and cut out. The tote pattern is 16 inches tall and 7 inches wide.



Wine Tote

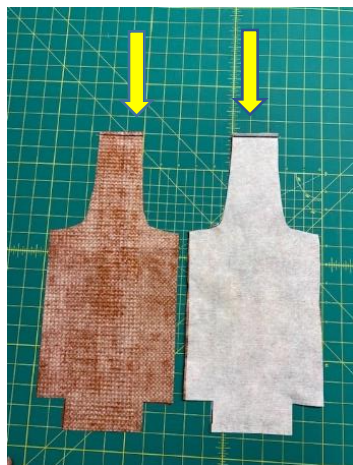
2. Cut two each of the main fabric, the lining fabric, and the stabilizer. (The pattern piece is also shown in the picture)



3. Fuse the stabilizer to both pieces of the main fabric.

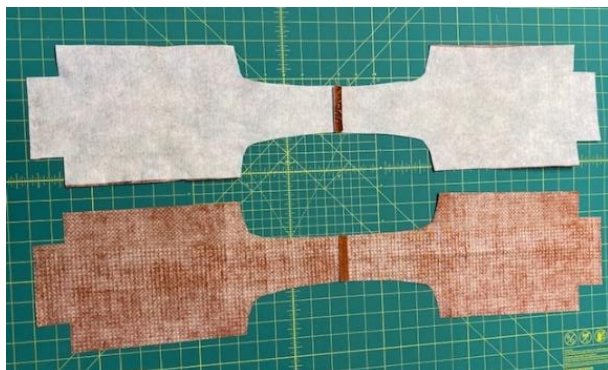


4. With right sides together, sew across the handle seam of the main fabric and the lining fabric (indicated by the black line in the picture.). Reinforce stitch at the start and end of each seam.



Wine Tote

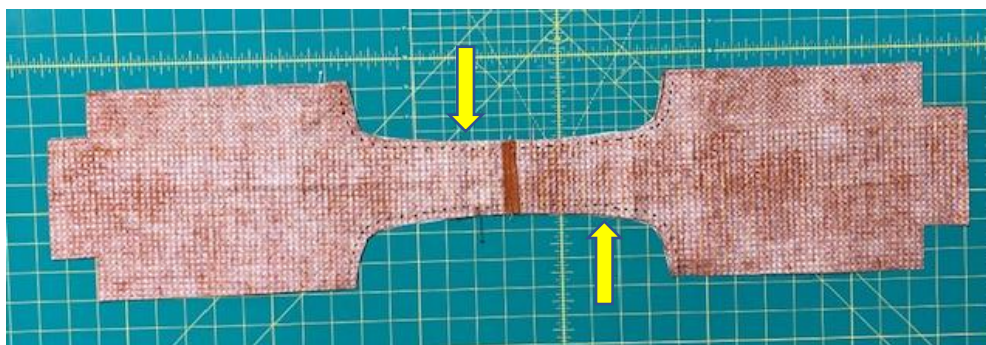
5. Press the seams open.



6. Next, lay the lining fabric on top of the main fabric with right sides together.



7. Make the tote handles by sewing the stitch lines indicated in the picture by the black dashed lines.



Wine Tote

8. Turn right side out by pulling through the handle that was just stitched, this takes a little bit of time and some patience.



9. Now it's time to sew the side and bottom seams. To do this, bring the right sides of the lining fabric and the right sides of the main fabric together. Use pins to secure the seams as you sew. Sew the side seams and the bottom seams as indicated by the black dashed lines in the picture below. On one side seam of the lining fabric, be sure to leave about 3 inches unsewn to turn the tote right side out (see arrow). Reinforce stitch at the start and end of each seam.



Wine Tote

10. Now it's time to box the corners to make a flat bottom. Bring the side seam and the bottom seam together, match the seams, pin and sew (see black dashed line). Do this for both corners of the main fabric and the lining fabric.



11. After sewing all 4 corners, turn the tote right-side out through the opening that was left in the lining. After turning right side out, sew the opening in the lining closed either by hand or by machine. Finish turning right side out - ta-da!

There are endless possibilities for these! Get creative with embellishments and fabrics.

- a) The "Give Thanks and be Grateful" is fussy cut from a terrycloth dish towel set.
- b) The "Turkey & Pie and Football Oh My!" is made from an embroidered dish towel.
- c) The Red, White, and Blue tote is from jellyroll strips sewn together and made with batting vs stabilizer
- d) The one with the pocket came from repurposing old jean.

